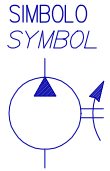
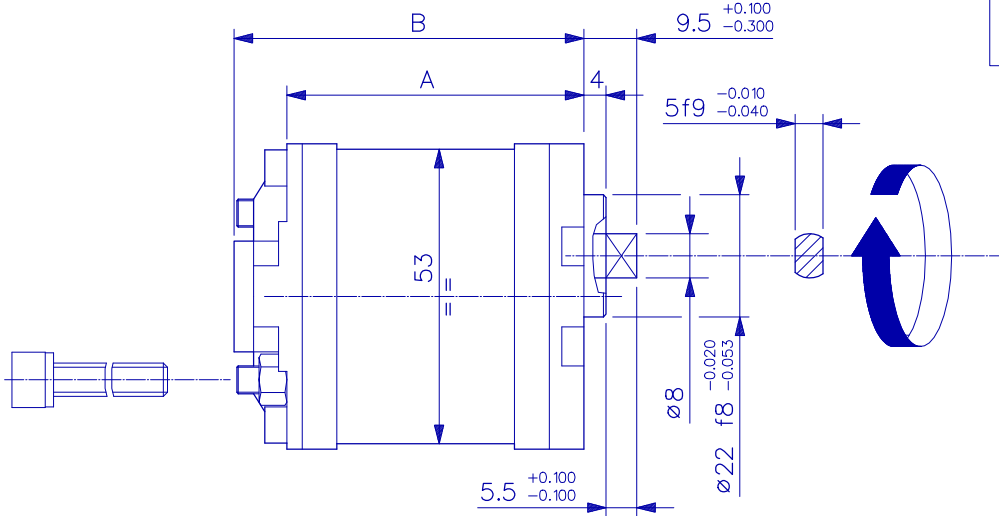


ROTAZIONE ALBERO: DESTRA
DIRECTION OF ROTATION: RIGHT



COPPIA DI SERRAGGIO
TIGHTENING TORQUE M5 = 5-7.5 Nm

DATI DI PROVA
TEST DATA

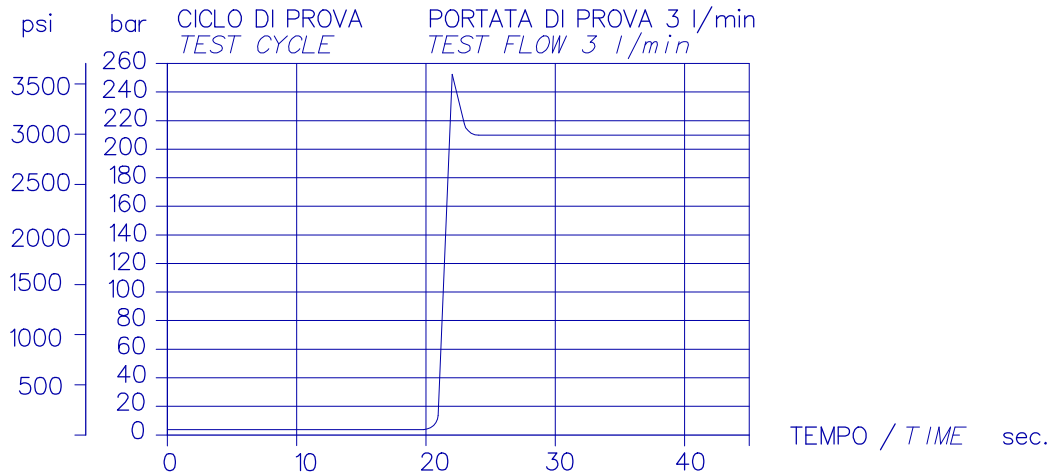
OLIO:
OIL: ISO VG 32 (RIF./REF. ISO 3448)
TEMPERATURA OLIO:
OIL TEMPERATURE: 50°C
TEMPERATURA AMBIENTE:
AMBIENT TEMPERATURE: 20°C
FILTRAZIONE: 25 micron O INFERIORE
FILTRATION: 25 micron OR BETTER

DURATA MASSIMA DELLE CENTRALI: 500.000 CICLI ALLA MASSIMA PRESSIONE

- 1) CICLO: 2 sec. ALLA MASSIMA PRESSIONE DI LAVORO.
2 sec. IN BY-PASS ALLA PRESSIONE MINIMA.

MAX. DURATION OF THE POWER PACKS: 500.000 CYCLES AT THE MAX. WORKING PRESSURE.

- 1) CYCLE: 2 sec. AT THE MAX. WORKING PRESSURE.
2 sec. IN BY-PASS AT THE MIN. PRESSURE.



RIFERIMENTO POMPA PUMP REFERENCE	TIPO POMPA PUMPS	CLINDRATA NOMINALE NOMINAL DISPLACEMENT cc/giro	CODICE POMPA PUMP CODE	CODICE KIT POMPA KIT PUMP CODE	PRESSIONE MAX. DI LAVORO MAX. WORKING PRESSURE bar	PRESSIONE PICCO PEAK PRESSURE bar	GIRI MAX. giri/min MAX. SPEED rpm	GIRI MIN. ALLA MAX. PRESSIONE MIN. SPEED AT THE MAX. WORKING PRESSURE rpm	B	A
A	PHR-05-0.25	0.31	23003800.002	17050019.002 (MR) 17050037.002 (MC)	210	245	4500	900	56	46.5
B	PHR-05-0.45	0.50	23004000.002	17050021.002 (MR) 17050036.002 (MC)	210	245	4500	900	63	53.5
C	PHR-05-0.56	0.63	23004100.002	17050022.002 (MR) 17050039.002 (MC)	210	245	4500	900	64	54.5
D	PHR-05-0.75	0.88	23004200.002	17050023.002 (MR) 17050038.002 (MC)	210	245	4000	900	66	56.5
J	PHR-05-0.92	1.00	23004300.002	17050024.002 (MR) 17050053.002 (MC)	210	245	3500	900	67	57.5
Z	PHR-05-1.26	1.25	23004400.002	17050025.002 (MR)	210	245	3000	900	69	59.5